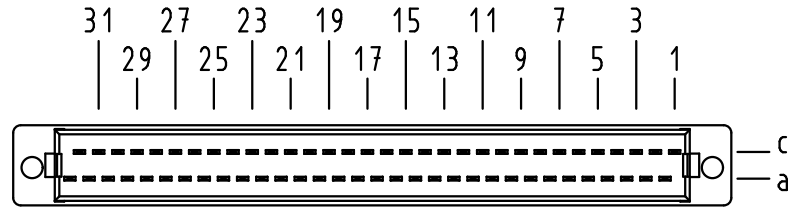


Y Kontaktanordnung
contact arrangement

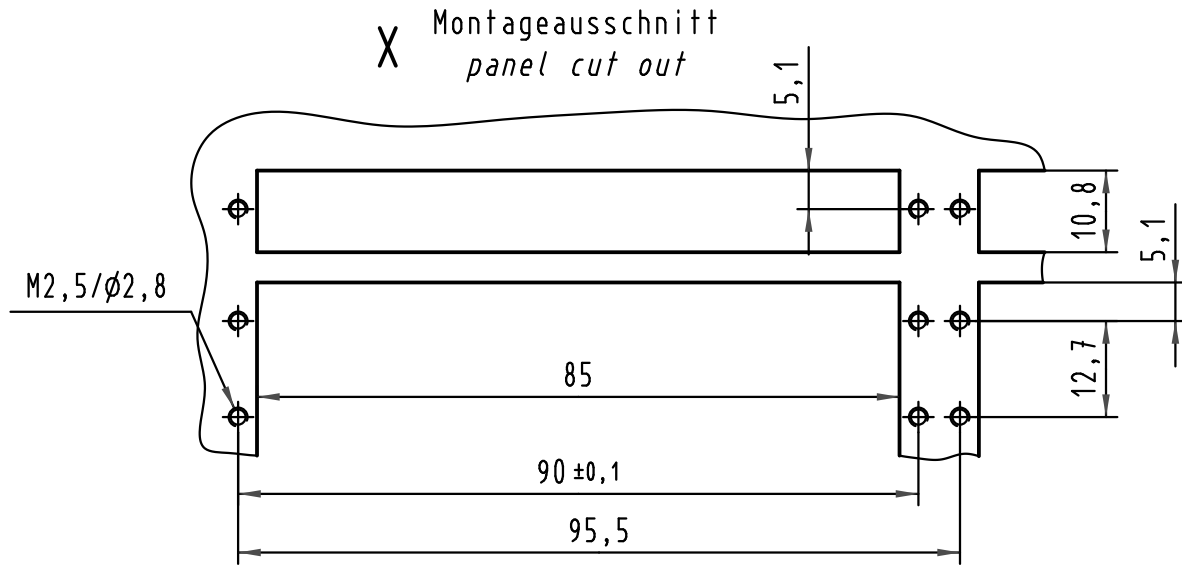


64 Kontakte
64 contacts

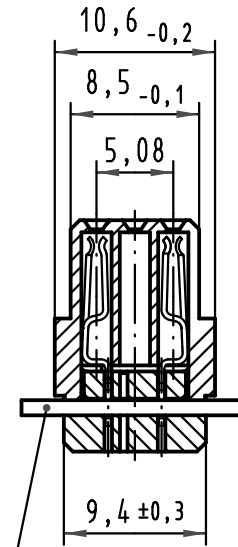
■ = Kontaktposition belegt
= position with contact

□ = Kontaktposition nicht belegt
= position without contact

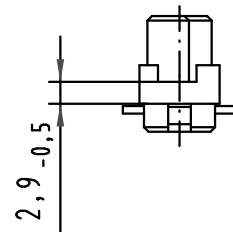
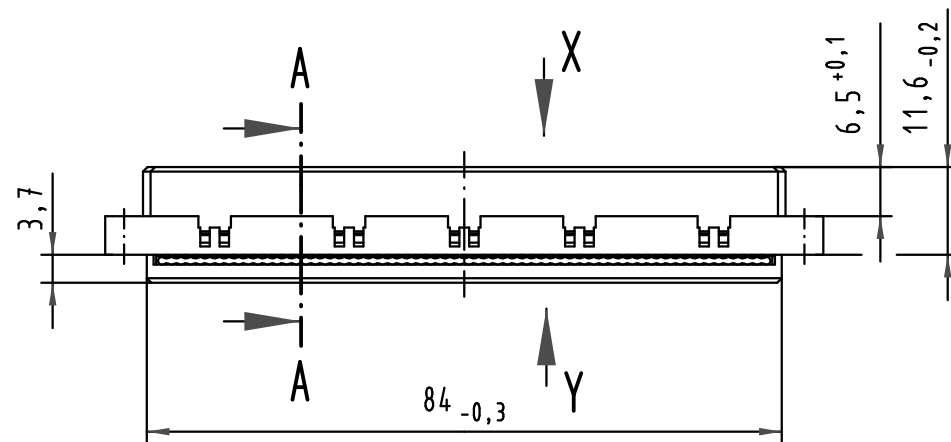
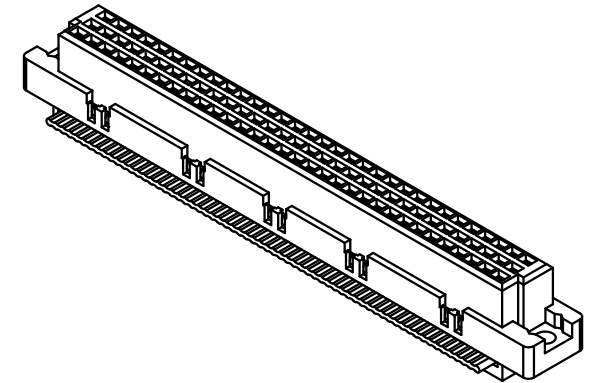
X Montageausschnitt
panel cut out



A-A
2:1

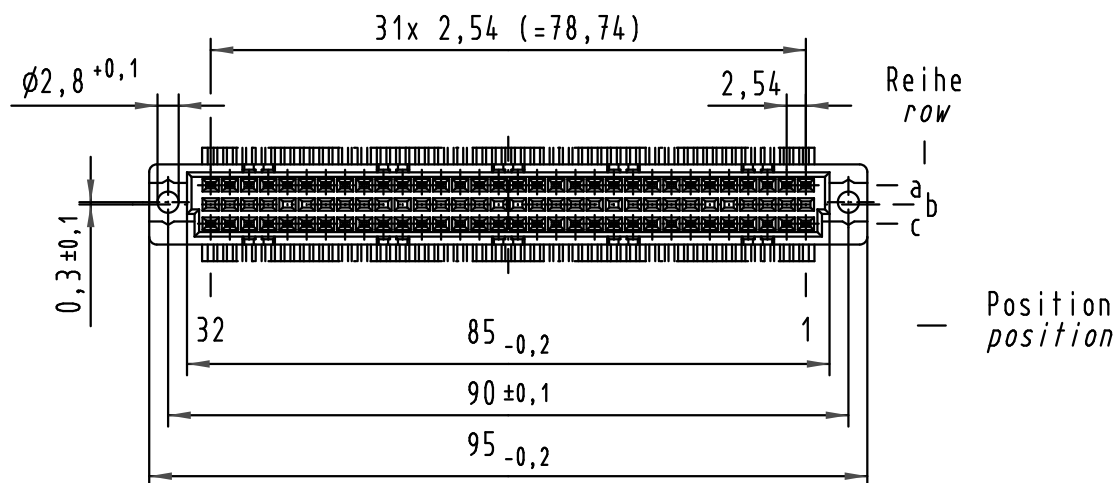


Flachleitung AWG 28/7
Raster 1,27mm
(gehört nicht zum Lieferumfang)
flat cable AWG 28/7
pitch 1,27mm
(is not in scope of delivery)



Ader 1 des Flachkabels auf Kontakt 1c
lead number 1 of flat cable on contact 1c

09 03 264 7828	3	Au über/over Ni
09 03 264 6828	2	Au über/over Ni
-	-	-
Bestell-Nr. part-no.	Anforderungsstufe nach IEC performance level acc.to IEC	Kontaktoberfläche contact plating



All Dimensions in mm Original Size DIN A 3			Techn. Character.			Nicht tolerierte Maßel/Free size tolerances IEC 60603-2		
						Typ C Federleiste mit Scheidklemmen, 64 pol. type C female connector with insulation displacement, 64 pol.		
			Detail.	15.01.08	LehT	Maßstab/Scale 1:1 2:1	TB 09 03 264 x828	
			Insp.	15.01.08	mte			
			Stand.					
35521	22.06.09	LehT	HARTING Electronics GmbH & Co. KG				Sub.	
34876			D-32339 ESPELKAMP					
Mod.	Dat.	Name						Blatt/page