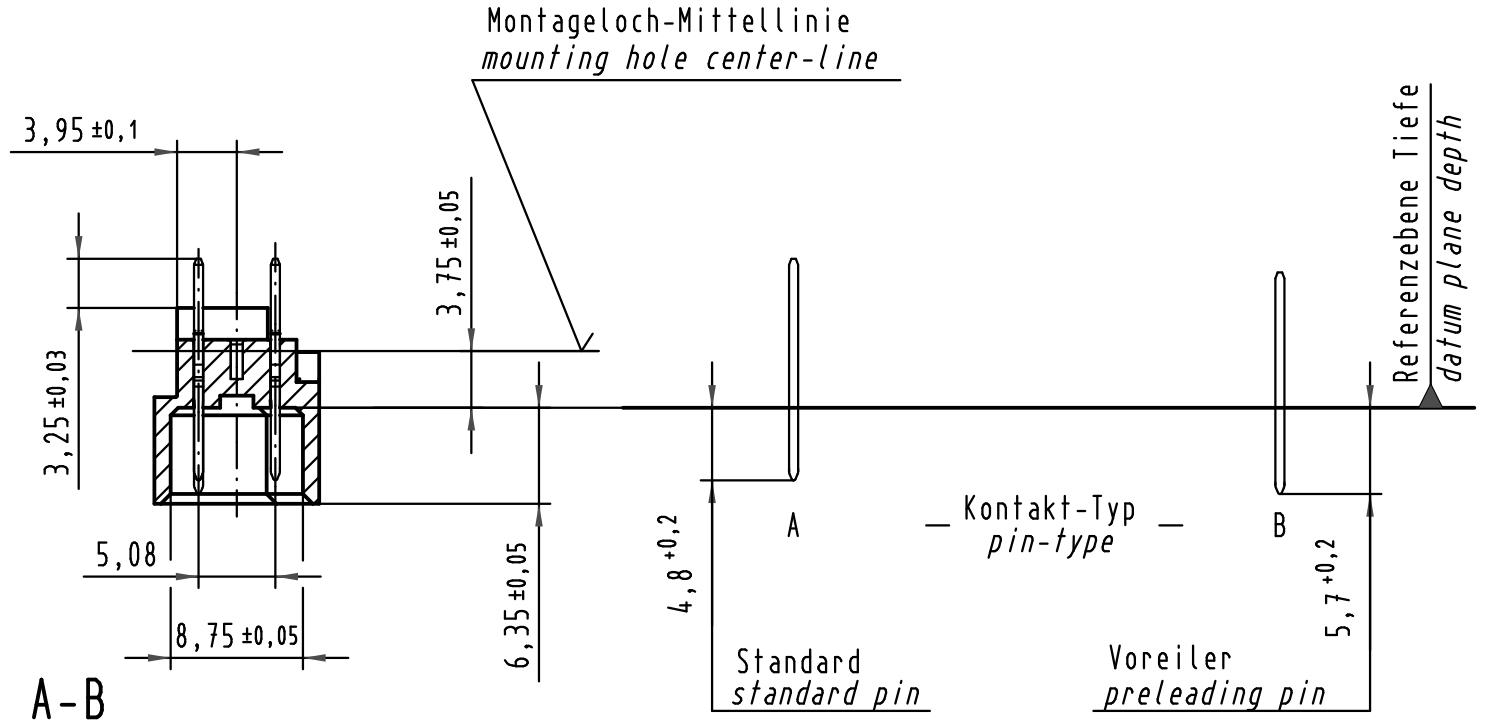
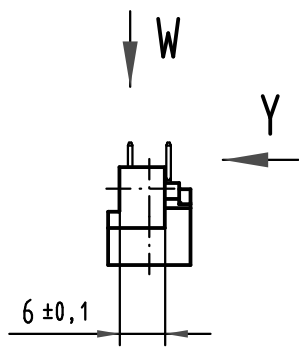
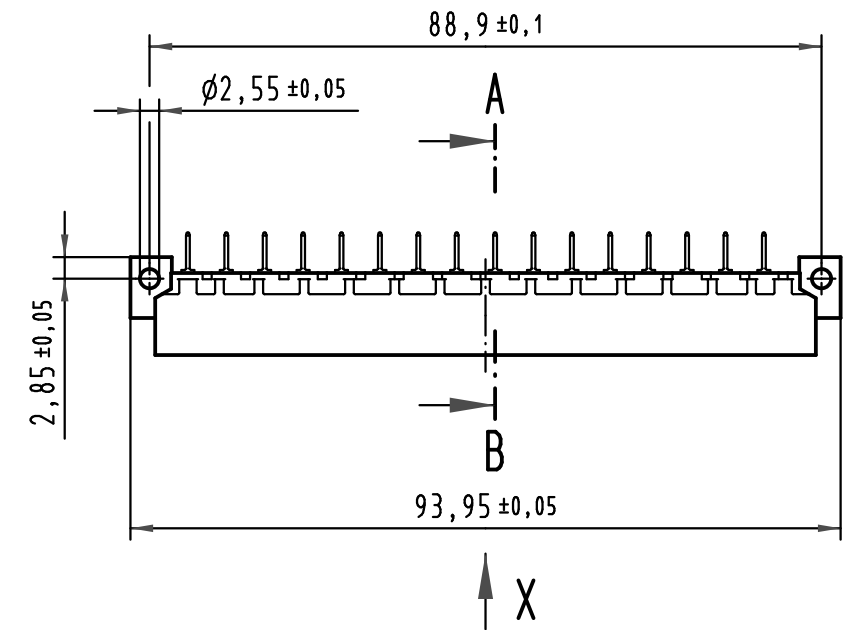
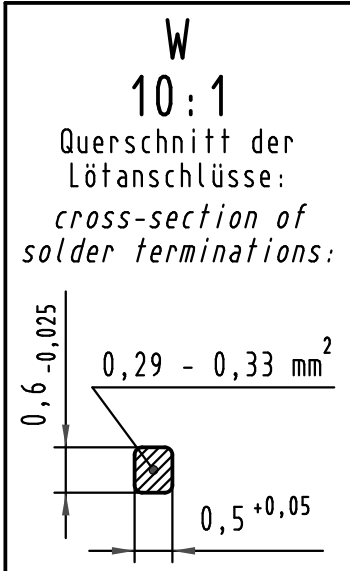
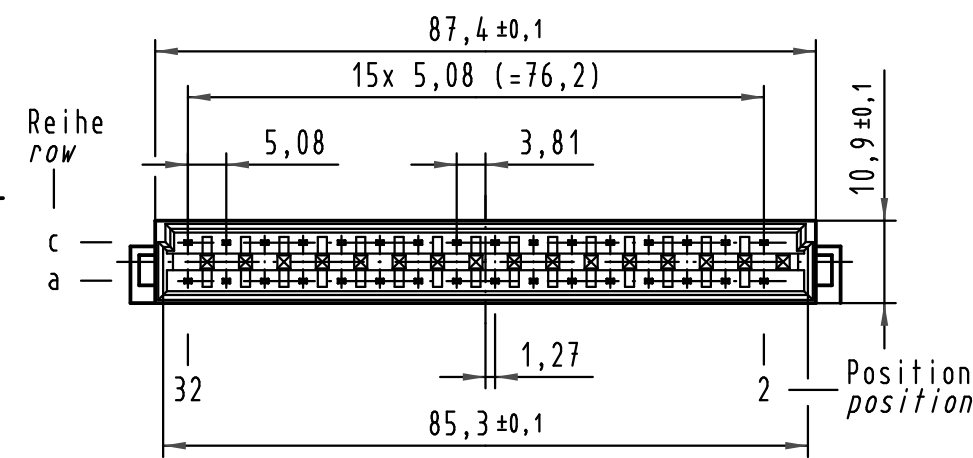
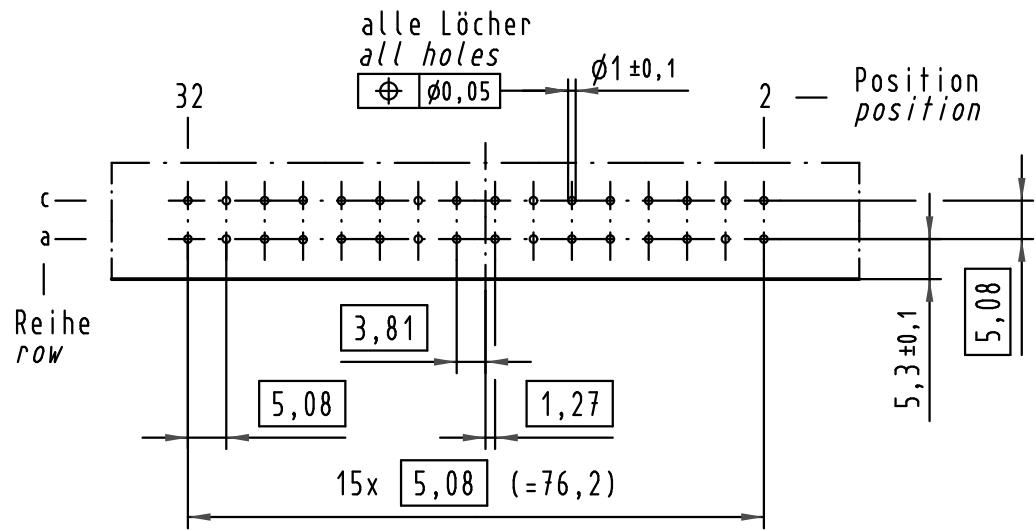
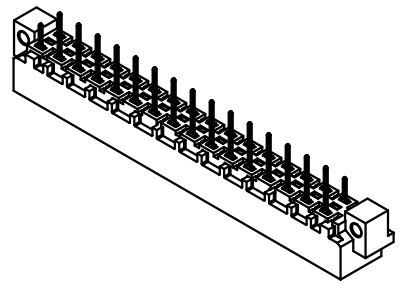
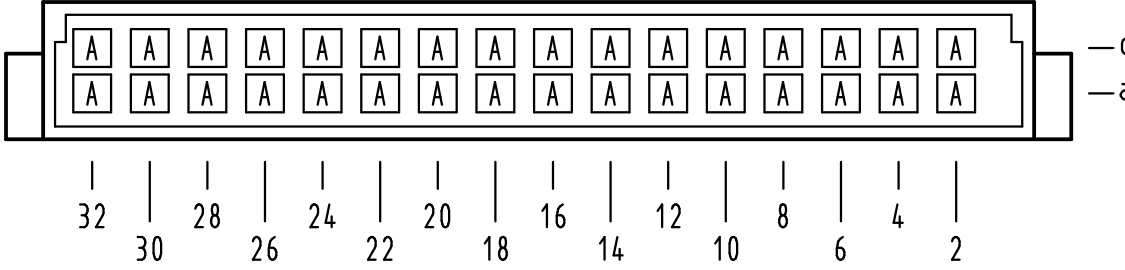


**Y
(Lochbild)
(board drillings)**



A-B
2:1

**X
Kontaktbelegung
contact loading**



| | | |
|-------------------------|---|--------------------------------------|
| 09 04 132 7922 | 3 | Au flash over PdNi over Ni |
| 09 04 132 6922 | 2 | Au flash over PdNi over Ni |
| Bestell-Nr. part-no. | Anforderungsstufe nach IEC performance level acc. to IEC | Kontaktoberfläche contact plating |

| | | | | | |
|--|----------|-------------------|----------------|---|--|
| All Dimensions in mm Original Size DIN A 3 | | Techn. Character. | | Nicht tolerierte Maße / Free size tolerances IEC 60603-2 | |
| | | Dat. | Name | Maßstab / Scale | |
| | | Detail. | 21.01.05 Hage. | 1:1 | |
| | | Insp. | 21.01.05 kfoe. | 2:1 | |
| | | Stand. | | 10:1 | |
| 35522 | 07.07.09 | Hage. | | Bauform / type D Messerleiste Einlöt gerade 32pol. male connector solder straight 32pol. | |
| 32537 | | | | | |
| Mod. | Dat. | Name | | | |
| HARTING Electronics GmbH & Co. KG D-32339 ESPELKAMP | | | | | |
| | | | | TB 09 04 132 x922 | |
| | | | | Blatt / page | |

Alle Rechte vorbehalten. All rights reserved