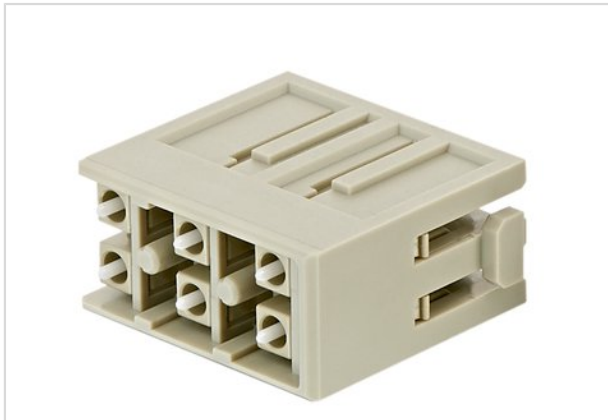


Han LC-module-M



Part number	09 14 006 4701
Specification	Han LC-module-M
HARTING eCatalogue	https://b2b.harting.com/09140064701

Identification

Category	Modules
Series	Han-Modular®
Type of module	Han® LC module

Version

Gender	Male
Number of contacts	6
Details	Please order contacts separately.

Technical characteristics

Limiting temperature	-40 ... +85 °C
Mating cycles	≥500

Material properties

Material (insert)	Polycarbonate
Colour (insert)	RAL 7032 (pebble grey)
Material flammability class acc. to UL 94	V-0
RoHS	compliant
ELV status	compliant
China RoHS	e
REACH Annex XVII substances	No
REACH ANNEX XIV substances	No
REACH SVHC substances	No

Commercial data

Packaging size	2
Net weight	6 g
Country of origin	Germany



Pushing Performance

Commercial data

European customs tariff number	85389099
--------------------------------	----------
