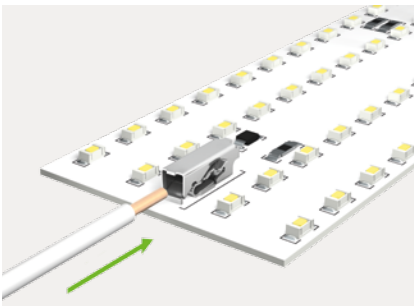
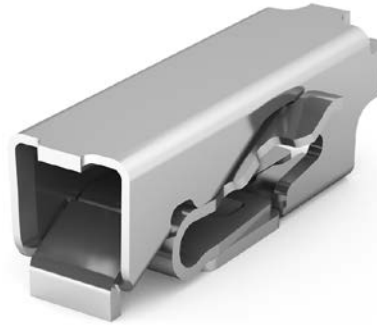


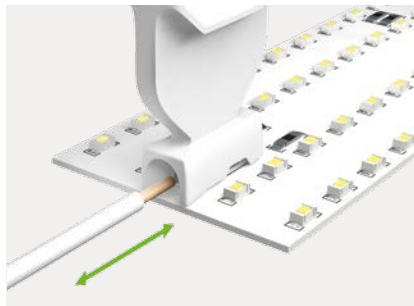
2065 SERIES

Reduced to the Essentials

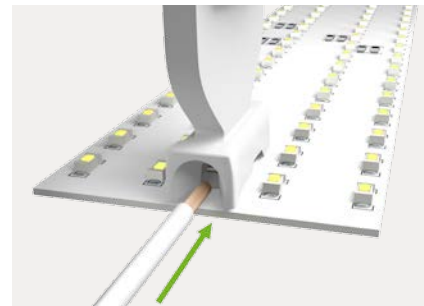
- Maximum conductor range, minimum installation space: 0.2 ... 0.75 mm² (24 ... 18 AWG)
- Compact design minimizes on-board LED shadowing
- Height of just 2.7 mm provides uniform light distribution
- A reliable alternative to wire soldering



Push-in termination of solid conductors

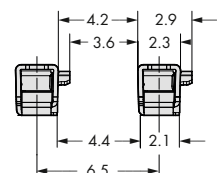
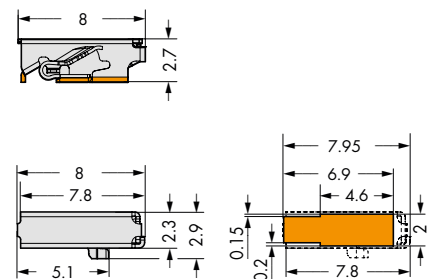


Insert fine-stranded conductors – and remove all conductor types – via operating tool (2065-189).



The operating tool's funneled conductor entry securely guides the conductor into the terminal block.

2065 Series					
Technical Data			Conductor Data		
Ratings per	IEC/EN 60664-1			Connection technology	Push-in CAGE CLAMP®
Oversvoltage category	III	III	II	Conductor range: solid	0.2 ... 0.75 mm ²
Pollution degree	3	2	2	Conductor range: fine-stranded	0.2 ... 0.75 mm ²
Rated voltage*	320 V	320 V	630 V		
Rated surge voltage	4 kV	4 kV	4 kV		
Rated current	9 A	9 A	9 A		
				AWG	24 ... 18
				Strip length	min. 7.5 mm / 0.3 inch
Pole No.	Item No.				
SMD PCB terminal blocks with push-buttons in tape-and-reel packaging					Reel diameter: 330 mm
1		2065-100/998-403			



*Rated voltage for 6.5 mm pin spacing
Any layout deviation must meet the insulation coordination safety standards (EN/IEC 60664-1) or end device standard requirements.

NOTE: Terminal block without insulation housing!
Protection against accidental contact must be provided at voltages higher than low voltages (e.g., SELV/PELV) for the relevant application.