

BP

Vortex cooler



CONNECT AND PROTECT



Description: Compact, reliable and low cost way to cool and purge enclosures. It produces cold air from compressed air, with no moving parts. The easy mounting through a standard electrical knockout makes this solution especially suitable to be installed even when the enclosures are already in the field. For a continuous Vortex operating, relative humidity inside the enclosure is maintained below 45%, no moisture condenses inside the enclosure (the enclosure must be sealed). Most TYPE 4 and 4X units include a silencer to minimize the noise. The coolers must be installed vertically to maintain the protection degree.

Material: Internal Vortex tube manufactured in stainless steel. External cover, BP TYPE 12 in plastic and aluminium, BP TYPE 4 in aluminium, and 4X in stainless steel.

Protection: Depending on type, up to IP66 | TYPE 4X.

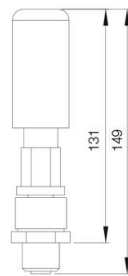
Pack quantity: Vortex cooler with mounting accessories.

IP 66 | TYPE 4X

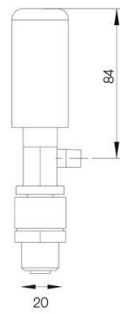


BP 4008

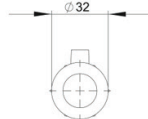
Front view



Side view

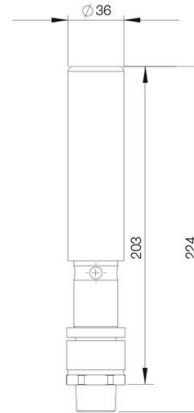


Top view

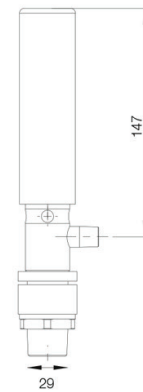


BP4015 / BP4030 / BP4040

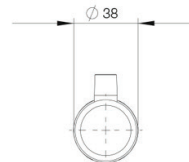
Front view



Side view



Top view



IP 54 | TYPE 12, Aluminium

H	Cooling Capacity (W)	Air flow (l/min)	Noise (dB)	Silencer included	Low pressure relief valve	Installation cut-out diam. (mm)	Air inlet	Weight (kg)	
131	162	227	78	No	No	22	1/8"	0.20	BP4008
203	293	425	87	No	No	29	1/4"	0.35	BP4015
203	586	850	88	No	No	29	1/4"	0.35	BP4030
203	820	1133	93	No	No	29	1/4"	0.35	BP4040

IP 66 | TYPE 4, Aluminium

H	Cooling Capacity (W)	Air flow (l/min)	Noise (dB)	Silencer included	Low pressure relief valve	Installation cut-out diam. (mm)	Air inlet	Weight (kg)	
126	162	227	78	No	Yes	33	1/8"	0.35	BP4608
185	293	425	73	Yes	Yes	48	1/4"	0.45	BP4615
185	586	850	74	Yes	Yes	48	1/4"	0.50	BP4630
185	820	1133	78	Yes	Yes	48	1/4"	1.00	BP4640

IP 66 | TYPE 4X, Stainless steel

H	Cooling Capacity (W)	Air flow (l/min)	Noise (dB)	Silencer included	Low pressure relief valve	Installation cut-out diam. (mm)	Air inlet	Weight (kg)	
126	162	227	78	No	Yes	33	1/8"	0.35	BP4608SS
185	293	425	73	Yes	Yes	48	1/4"	0.45	BP4615SS
185	586	850	74	Yes	Yes	48	1/4"	2.25	BP4630SS
185	820	1133	78	Yes	Yes	48	1/4"	1.00	BP4640SS

Cooling capacity is calculated with pressured air being 20 °C and having 7-bar pressure.