

Stainless Steel Terminal Boxes

BL-KK Terminal Boxes IP66 up to IP68
SL-KK Terminal Boxes IP69K

Design an precision

Setting standards

Stainless steel terminal boxes are convincing to the smallest detail by innovative solutions. Design, choice of materials and many years of know-how in processing with unique designs are what the stainless steel terminal boxes make so extraordinary even in the standard version up to IP68. Of course all terminal boxes are also available **up to protection class IP69K. In any dimension.**

Guaranteed and certified

Quality is the standard for the stainless steel terminal boxes. The manufacturer is certified, owns numerous patents and satisfies the strictest requirements for quality and testing criteria for all applications in germany and abroad.



The stainless steel terminal boxes feature a design with patented screw connection! Rugged, hygienic and reliable for every application.

1

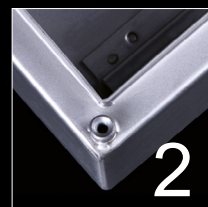
The special **silicone seal** is designed for **extreme loads**, steamjet cleaning f.e.. Safe adhesion, water cannot penetrate.

2

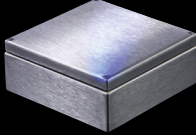
The welded **multipurpose screw nut** ensures not only extreme fitting accuracy of the lid, but also guaranteed tightness and ruggedness.

3

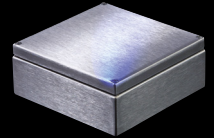
The mounting is outside the enclosure interior. **Countersunk screws with cone guidance** seal lid and body without any gap. Hygienic and safe.



Technical Description Terminal Boxes BL-KK up to IP68

Material:	<p>Stainless steel 1.4301, AISI 304 Stainless steel 1.4404, AISI 316L (V4A) Stainless steel 1.4571, AISI 316Ti (V4A)</p>	
Material thickness:	The material thickness is chosen from 1.25mm	
Areas of use:	<p>Our terminal boxes can be used in different areas: Inside and outside, ex-area, offshore, railway, automotive</p>	
Temperature areas:	-20°C to +90°C	
Protection class:	IP68	
Inspections/ certificates:	<p>Protection class tests IP68 ATEX-certified terminal boxes and terminal boxes with hinges with EX-protection, ExLine housing are available with IECEx-approval as well</p>	
Construction- features:	<p>The lid is supported on the IP68 body 2 mm towards the inside: Protection against ingressing water/dust, knife edge seal without gap for all housing sizes</p>	
Closing:	<p>Welded-on multifunction nuts Screw connection with recessed screws and conical insertion that are applied outside of the sealing space</p>	
Option:	Additional stainless steel hinge, closure is still performed by screws	
Wall attachment:	<p>IP66: Attachment bore diameter 7mm IP67/IP68: Housing without attachment bore Optional: Attachment is performed via welded-on wall tabs with attachment bore (please indicate in your order)*</p>	
Protection/safety:	Grounding set M6x12, DIN EN 60439-1:1994	
Seal:	Silicone seal 7x10mm	
Installations/ Accessories:	Assembly angle welded on as stainless steel	
Surface:	Polished, grain size 240	

Delivery Range Terminal Boxes BL-KK up to IP68 Standard Delivery Programme



Terminal boxes, extremely resilient, up to IP68

Material:	Stainless steel 1.4301, AISI 304* Stainless steel 1.4404, AISI 316L, (V4A)* Stainless steel 1.4571, AISI 316Ti, (V4A)*
Material thickness:	See table
Surface:	Polished, grain size 240
Protection class:	IP68, >NEMA 4X
Closing:	Welded-on multifunction nuts Screw connection with recessed screws and conical guide, attached outside of the sealing space
Seal:	Silicone seal 7 mm x 10 mm
Wall attachment:	IP66: Attachment bore diameter 7 mm IP67/IP68: Housing without attachment bore Optional: Attachment is performed via welded-on wall tabs with attachment bore (please indicate in your order)*
Dimensions:	See table. Other sizes available. *please indicate in your order

Designation	Size in (mm) height	x	Width	x	Depth	Material- thickness (mm)
BL-KK 101006	100	x	100	x	60	1,25
BL-KK 101506	100	x	150	x	60	1,25
BL-KK 102006	100	x	200	x	60	1,25
BL-KK 151508	150	x	150	x	80	1,25
BL-KK 153008	150	x	300	x	80	1,25
BL-KK 154008	150	x	400	x	80	1,25
BL-KK 202008	200	x	200	x	80	1,25
BL-KK 202012	200	x	200	x	120	1,25
BL-KK 203008	200	x	300	x	80	1,25
BL-KK 203012	200	x	300	x	120	1,25
BL-KK 204012	200	x	400	x	120	1,25
BL-KK 206012	200	x	600	x	120	1,25
BL-KK 303012	300	x	300	x	120	1,25
BL-KK 303016	300	x	300	x	160	1,25
BL-KK 304016	300	x	400	x	160	1,25
BL-KK 305016	300	x	500	x	160	1,25
BL-KK 383816	380	x	380	x	160	1,25
BL-KK 405016	400	x	500	x	160	1,25
BL-KK 406016	400	x	600	x	160	1,25