

### Cable Scout+

#### • Cable Scout+ - Sets

#### Features and Benefits

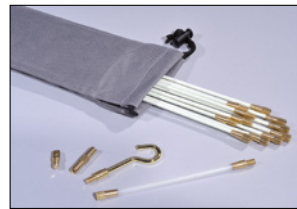
- Professional cable installation tool
- Installation jobs in record time in the most challenging environments
- Rods made of glass-reinforced plastic (GRP)
- Pull cable weight of up to 200 kg
- User can inspect, illuminate and retrieve
- Complete system of rods, useful attachments and storage bag



All components stored neat and tidy with the Cable Scout+ Deluxe set.



One Step to the Web!



Basic Set.



Handy Set.

TYPE	Description	Content Rods	Rod Capacity (m)	Content Accessories	Article-No.
CS-SD	Deluxe Set: a comprehensive set aimed for carrying out larger installations.	2 x 4 x 1000 (yellow) 6 x 5 x 1000 (red) 2 x 6 x 1000 (black)	10.0 m	175 white flexi lead, split ring, gender changer, tuff hook, mini eye, domed bullet, flat bullet, super beam, single magnet	897-90001
CS-SH	Handy Set: made up for fitting in a tool box	1 x 4 x 350 (yellow) 2 x 5 x 350 (red) 1 x 6 x 350 (black)	1.6 m	330 white flexi lead, domed bullet, mini hook, mini eye	897-90003
CS-SB	Standard Set: designed to perform basic cable installation	1 x 4 x 1000 (yellow) 4 x 5 x 1000 (red)	10.0 m	175 white flexi lead, split ring, gender changer, tuff hook, mini eye, domed bullet	897-90000

All dimensions in mm. Subject to technical changes.

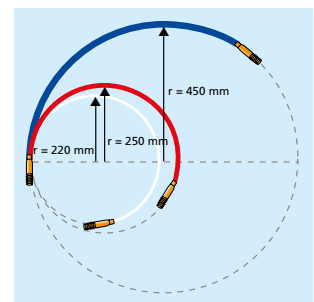
#### • Rod Sets - Rod Pairs



Overview of the rods selection.

TYPE	Content Rods	Flexibility	Ø D	Article-No.
CS-P6	One pair of 1 m blue rods	strong	6.0	897-90007
CS-PN	One pair of 1 m nylon rods	fully flexible	5.0	897-90008
CS-P5	One pair of 1 m red rods	medium	5.0	897-90006
CS-P4	One pair of 1 m white rods	flexible	4.0	897-90005

All dimensions in mm. Subject to technical changes.



Overview on Rod Sets marginal bending radii.



### Cable Scout+

- **Cable Scout+ - Further accessories**

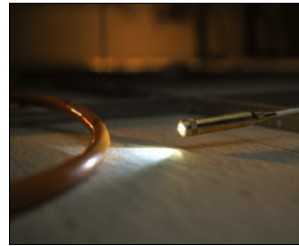
Cable Scout+ comes with many useful accessories. Cable Grips are designed to grip objects from the outside and provide a very reliable super fast method for securing pipes and cables to the rods. Just open a grip by compressing the braided sleeving, push it over a cable and let go, the material will contract immediately and establish a tight grip of the cable to the tool.

#### Features and Benefits

- Professional cable installation tool
- Installation jobs in record time in the most challenging environments
- Rods made of glass-reinforced plastic (GRP)
- Pull cable weight of up to 200 kg
- User can inspect, illuminate and retrieve
- Complete system of rods, useful attachments and storage bag



Cable Grips are available in five different sizes to attach a wide range of cable diameters.



The Rod Set Beam - a perfect tool for seeing into cavities.



The whisk allows the rod to glide over obstructions easily.



The strong magnet lifts a metallic tool of up to 2.5 kg.

TYPE	Drawing	Description	Article-No.
CS-SA		Accessory Kit: Includes a 15 cm long flexi lead, gender changer, mini hook, tuff hook, mini eye, split ring, round bullet, flat bullet, single magnet, chain	897-90004
CS-ACG1630		Cable Grip: Suitable for diameter 1.6 - 3.0 cm	897-90027
CS-ACG0415		Cable grips: Suitable for diameters 0.4 - 1.5 cm	897-90026
CS-AW		Whisk: Enables cables to glide over rough and uneven surfaces.	897-90018
CS-AB		Beam: Useful for inspection purposes in dark surroundings.	897-90016
CS-AMG2		Strong Magnet: A helpful tool to lift metal tools with up to 2.5 kg weight	897-90015

All dimensions in mm. Subject to technical changes.