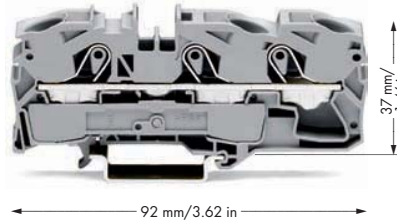
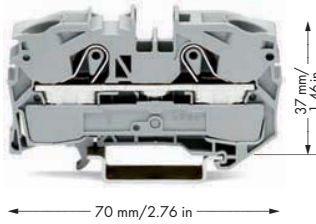


Through/Ground Conductor and Terminal Blocks 16 (25 "f-st") mm² TOPJOB® S - 2016 Series

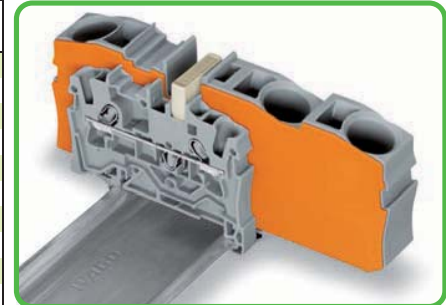


0.5 - 16 (25 "f-st") mm ² ① 800 V/8 kV/3 ② I _N 76 A (90 A)	AWG 20 - 4 600 V, 85 A ③ 600 V, 85 A ④	0.5 - 16 (25 "f-st") mm ² ① 800 V/8 kV/3 ② I _N 76 A (90 A)	AWG 20 - 4 600 V, 85 A ③ 600 V, 85 A ④
Terminal block width 12 mm / 0.472 in 18 - 20 mm / 0.75 in ⑤		Terminal block width 12 mm / 0.472 in 18 - 20 mm / 0.75 in ⑤	

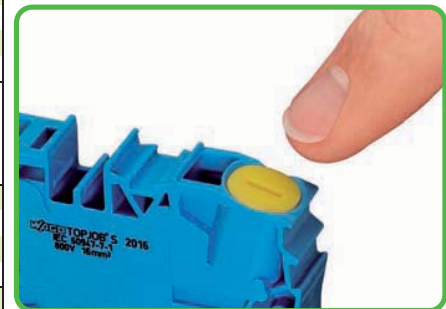


- ① Conductor sizes: 0.5 mm² - 16 mm² "s + f-st", 25 mm² "f-st"; Push-in conductor sizes: 2.5 mm² - 16 mm² "s" and 2.5 mm² - 16 mm² "insulated ferrule, 18 mm"
- ② 800 V = rated voltage
8 kV = rated surge voltage
3 = pollution degree (also see Section 14)
- ③ Strip length, see packaging or instructions.
- ④ Suitable for Ex i applications
- ⑤ Suitable for Ex e II applications
550 V, 70 A for 2-conductor terminal blocks
550 V, 67 A for 3-conductor terminal blocks
Jumper 65 A (also see Section 14)
- ⑥ See application notes for:
Ex e/Ex i separator plate, page 48

Item No.	Pack. Unit	Item No.	Pack. Unit
2-conductor through terminal block		3-conductor through terminal block	
gray ⑤ 2016-1201 ⑤ 20		gray ⑤ 2016-1301 ⑤ 20	
blue ⑤ 2016-1204 ④ ⑤ 20		blue ⑤ 2016-1304 ④ ⑤ 20	
orange ⑤ 2016-1202 ⑤ 20		orange ⑤ 2016-1302 ⑤ 20	
2-conductor ground terminal block, 15mm-high DIN 35 rails shall be used for a current load higher than 76A!		3-conductor ground terminal block, 15mm-high DIN 35 rails shall be used for a current load higher than 76A!	
green-yellow ⑤ 2016-1207 ⑤ 20		green-yellow ⑤ 2016-1307 ⑤ 20	
Item-Specific Accessories		Item-Specific Accessories	
End and intermediate plate, 1 mm thick		End and intermediate plate, 1 mm thick	
orange 2016-1292 100 (4x25)		orange 2016-1392 100 (4x25)	
gray 2016-1291 100 (4x25)		gray 2016-1391 100 (4x25)	
Ex e/Ex i separator, orange, 3 mm thick			
120 mm 209-191 50 (2x25)			
2016 Series Accessories Appropriate marking systems: WMB/Marking strips (see Section 13)			
Push-in type jumper bar, insulated, I _N 76 A, light gray		Protective warning marker, with high-voltage symbol, black, for 5 terminal blocks	
2-way 2016-402 50 (2x25)		yellow 2016-115 100 (4x25)	
3-way 2016-403 50 (2x25)		Finger guard, touchproof cover protects unused conductor entries	
4-way 2016-404 50 (2x25)		yellow 2016-100 100 (4x25)	
5-way 2016-405 100 (4x25)		Test plug adapter, for test plug 4 mm Ø	
Push-in type jumper bar, insulated, I _N 76 A, light gray		gray 2009-174 100 (4x25)	
1 - 3 2016-433 50 (2x25)		Testing tap, for max. 2.5 mm ²	
1 - 4 2016-434 50 (2x25)		gray 2009-182 100 (4x25)	
1 - 5 2016-435 100 (4x25)		WMB Multi marking system, 10 strips with 10 markers per card, stretchable 5 - 5.2 mm	
Star point jumper, insulated, I _N = I _N terminal block, light gray		plain 793-5501 5	
1-3-5 2016-405/011-000 50 (2x25)		Marking strip, plain, 11 mm wide, 50 m roll	
Step-down jumper, insulated, I _N 57 A, light gray		white 2009-110 1	
2016-499 50 (2x25)			



Commoning with step-down jumpers
An end plate must be inserted between the terminal blocks to be jumpered. Step-down jumper 2016-499 commons 16/10 mm² (AWG 16/8) terminal blocks with 10/6/4/2.5 mm² (AWG 8/10/12/14) terminal blocks. Step-down jumpers are simply pushed down for full insertion, similar to other push-in type jumper bars.



Inserting a finger guard seals unused conductor entries.