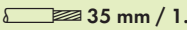
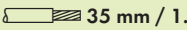
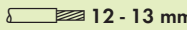
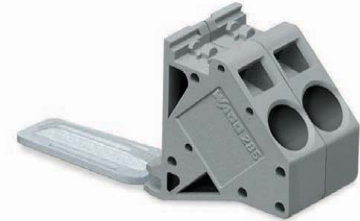
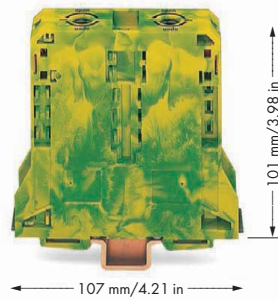
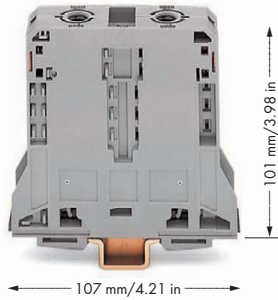


High-Current Through/Ground Conductor and  Terminal Blocks95 mm²

285 Series

25 - 95 mm ² 1000 V/8 kV/3 ② I _N 232 A	AWG 4 - 4/0 600 V, 200 A [Ⓜ] 600 V, 210 A [Ⓢ]	25 - 95 mm ²	AWG 2 - 000	0.2 - 10 mm ² ① AWG 24 - 8 1000 V/8 kV/3 ② I _N 57 A
Terminal block width 25 mm / 0.98 in  35 mm / 1.38 in ③		Terminal block width 25 mm / 0.98 in  35 mm / 1.38 in ③		Module width 20 mm / 0.787 in  12 - 13 mm / 0.49 in ③



Item No.	Pack. Unit	Item No.	Pack. Unit	Item No.	Pack. Unit
2-conductor through terminal block, to be used exclusively on DIN 35 x 15 rail; 2.3 mm thick		2-conductor ground terminal block, to be used exclusively on DIN 35 x 15 rail; 2.3 mm thick, copper		Voltage tap, for 95 mm ² high-current terminal blocks	
gray 285-195  5		green-yellow 285-197  5		gray 285-407  5	
blue 285-194  5		green-yellow  ④ 5			
light gray  ④ 5					
Item-Specific Accessories		Item-Specific Accessories		Item-Specific Accessories	
Adjacent jumper, insulated, I _N 232 A for 1 jumper, I _N 130 A for 2 - 4 jumpers		Adjacent jumper, insulated, I _N 232 A for 1 jumper, I _N 130 A for 2 - 4 jumpers		Protective warning marker, with high-voltage symbol, black,	
 gray 285-495 25		 gray 285-495 25		 yellow 284-415 50 (2x25)	
Protective warning marker, with high-voltage symbol, black		Protective warning marker, with high-voltage symbol, black		WMB Multi marking system, 10 strips with 10 markers per card, for 5 - 17.5 mm width	
 yellow 285-170 50 (2x25)		 yellow 285-170 50 (2x25)		 plain 793-501 5	
Finger guard, touchproof cover protects unused conductor entries and jumper slots		Finger guard, touchproof cover protects unused conductor entries and jumper slots		WMB Multi marking system, 10 strips with 10 markers per card, stretchable 5 - 5.2 mm	
 yellow 285-169 25		 yellow 285-169 25		 plain 793-5501 5	
Hex wrench with partially insulated shaft 285-172 1		Hex wrench with partially insulated shaft 285-172 1			
Three-phase set, with 95mm ² high-current terminal blocks		Three-phase set, with 95mm ² high-current terminal blocks			
 285-199 1		 285-199 1			
WMB Multi marking system, 10 strips with 10 markers per card, for 5 - 17.5 mm width		WMB Multi marking system, 10 strips with 10 markers per card, for 5 - 17.5 mm width			
 plain 793-501 5		 plain 793-501 5			
WMB Multi marking system, 10 strips with 10 markers per card, stretchable 5 - 5.2 mm		WMB Multi marking system, 10 strips with 10 markers per card, stretchable 5 - 5.2 mm			
 plain 793-5501 5		 plain 793-5501 5			
Steel carrier rail, acc. to EN 60715, 35 x 15 mm, 2.3 mm/0.091 in thick, 2 m/6'6" long		Copper carrier rail, acc. to EN 60715, 35 x 15 mm, 2.3 mm/0.091 in thick, 2 m/6'6" long			
 unslotted 210-118 10		 unslotted 210-198 10			
Copper carrier rail, acc. to EN 60715, 35 x 15 mm, 2.3 mm/0.091 in thick, 2 m/6'6" long					
 unslotted 210-198 10					