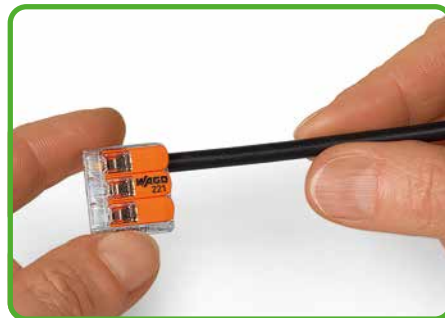


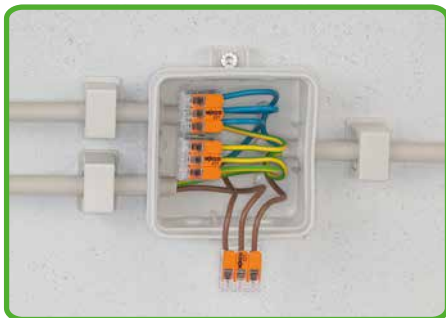
Strip wire to 11 mm / 0.43 in.



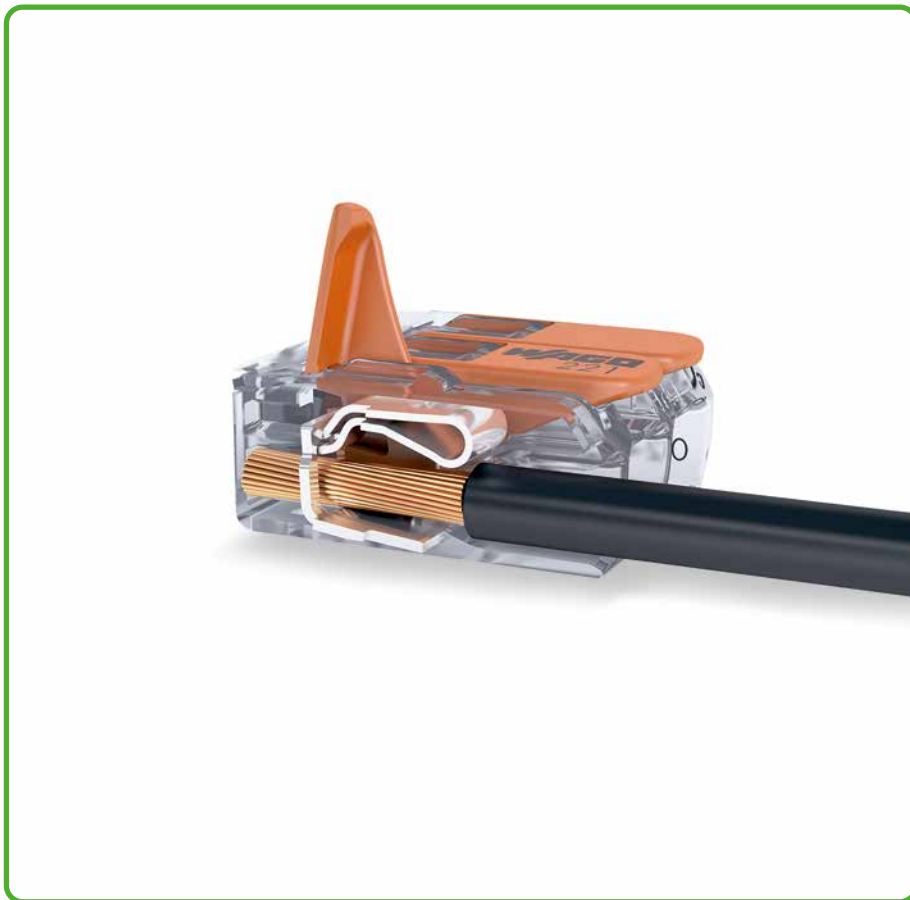
Termination: Open clamping unit using the lever and insert conductor.



Then lower lever to close the clamp.



Wiring fine-stranded conductors in a junction box.



Individual design of low-voltage lighting systems.



Lighting distribution in ceiling canopy



Pendant light connection in suspended ceilings

**CAGE CLAMP®**  
 clamps the following  
 copper conductors:\*

- solid
- stranded

fine-stranded,  
 also with tinned  
 single strands

fine-stranded,  
 tip-bonded

\* For aluminum conductors, see notes in Full Line Catalog, Volume 1, Section 14.